



Progress Dynamics® Installation Guide

© 2005 Progress Software Corporation. All rights reserved.

Progress® software products are copyrighted and all rights are reserved by Progress Software Corporation. This manual is also copyrighted and all rights are reserved. This manual may not, in whole or in part, be copied, photocopied, translated, or reduced to any electronic medium or machine-readable form without prior consent, in writing, from Progress Software Corporation.

The information in this manual is subject to change without notice, and Progress Software Corporation assumes no responsibility for any errors that may appear in this document.

The references in this manual to specific platforms supported are subject to change.

A [Stylized], Allegrix, Allegrix & Design, Business Empowerment, eXcelon, ObjectStore, PeerDirect, Progress, Progress Dynamics, Powered by Progress, Empowerment Center, Progress Empowerment Center, Progress Empowerment Program, Progress Fast Track, Progress OpenEdge, Progress Profiles, Partners in Progress, Partners en Progress, Progress en Partners, Progress in Progress, P.I.P., Progress Results, Progress Software Developers Network, ProVision, ProCare, ProtoSpeed, SmartBeans, SpeedScript, Technical Empowerment, and WebSpeed are registered trademarks of Progress Software Corporation or one of its subsidiaries or affiliates in the U.S. and/or other countries. AccelEvent, A Data Center of Your Very Own, AppsAlive, AppServer, ASPen, ASP-in-a-Box, BusinessEdge, Cache-Forward, Fathom, Future Proof, IntelliStream, ObjectCache, ObjectStore Event Engine, ObjectStore RFID Accelerator, ObjectStore Trading Accelerator, OpenEdge, POSSE, POSSENET, ProDataSet, Progress Business Empowerment, Progress for Partners, PSE Pro, PS Select, SectorAlliance, SmartBrowser, SmartComponent, SmartDataBrowser, SmartDataObjects, SmartDataView, SmartDialog, SmartFolder, SmartFrame, SmartObjects, SmartPanel, SmartQuery, SmartViewer, SmartWindow, WebClient, and Who Makes Progress are trademarks or service marks of Progress Software Corporation or one of its subsidiaries or affiliates in the U.S. and other countries.

Java and all Java-based marks are trademarks or registered trademarks of Sun Microsystems, Inc. in the U.S. and other countries.

Any other trademarks and service marks contained herein are the property of their respective owners.

February 2005



Product Code: 4479
Item Number: 101924;V2.1B

Contents

Preface	vii
Purpose	vii
Audience	vii
Organization	vii
Typographical conventions	viii
Progress messages	ix
1. Before You Install Progress Dynamics	1-1
1.1 Checklist of installation tasks	1-2
1.1.1 Installing Progress Dynamics for the first time	1-2
1.1.2 Upgrading Progress Dynamics	1-3
1.2 System requirements	1-5
1.2.1 Supported platforms	1-5
1.2.2 Software prerequisites	1-6
1.3 Preinstallation tasks	1-7
1.3.1 Registering your Progress Dynamics site and Repositories ..	1-7
1.4 Preinstallation tasks for upgrades	1-8
1.4.1 Back up databases	1-8
1.4.2 Set up the Version 2.1 working environment	1-9
2. Installing Progress Dynamics	2-1
2.1 Installation overview	2-2
2.2 Running the InstallShield program	2-2
2.3 Running the Progress Dynamics Configuration Utility	2-10

3.	After You Install Progress Dynamics	3-1
3.1	Editing your Windows services file	3-2
3.2	Editing installed files	3-3
3.3	Additional tasks for upgrades	3-4
3.3.1	Edit the Progress Dynamics XML configuration file	3-4
3.3.2	Start a development session	3-8
3.3.3	Stop and restart Progress Dynamics	3-8
3.3.4	Update session types	3-9
3.3.5	Run the Entity Import tool	3-11
3.3.6	Recompile application code	3-11
3.4	Setting up for Web development	3-12
3.5	Starting Progress Dynamics	3-12
3.6	Securing the Progress Dynamics installation	3-16
3.7	Shutting down Progress Dynamics	3-18
3.8	Uninstalling Progress Dynamics	3-18
A.	Installing and Viewing Progress Dynamics Documentation.....	A-1
A.1	Viewing the PDF files	A-2
A.2	Searching the PDF files	A-2
A.2.1	Configuring Acrobat Reader Version 5.0 to launch in a separate window	A-3
A.2.2	Configuring Acrobat Reader Version 4.05 to launch in a separate window	A-3
A.2.3	Using the Search button	A-4
A.3	Manually opening the PDF files	A-4
A.4	Copying the PDF files to your machine	A-5
A.5	Error when inserting the CD	A-5
Index	Index-1	

Tables

Table 3–1: Progress Dynamics files that you can edit 3–3

Preface

Purpose

This guide describes how to install and configure Progress Dynamics® Version 2.1B. It also describes how to install and view the Progress Dynamics online documentation.

Audience

This guide is designed for Progress® 4GL programmers who have some familiarity with Progress ProVisionPlus®, the ADM, and WebSpeed® (for creating Web applications).

Organization

This guide is organized as follows:

[Chapter 1, “Before You Install Progress Dynamics”](#)

Describes what you need to do before you install Progress Dynamics software on your system. It includes a checklist of installation tasks depending on whether you are installing Progress Dynamics for the first time or upgrading from the previous Progress Dynamics release.

[Chapter 2, “Installing Progress Dynamics”](#)

Describes how to run the installation programs for the Progress Dynamics Version 2.1B software. The installation of Progress Dynamics consists of two parts: an InstallShield® executable and a Progress 4GL utility, the Progress Dynamics Configuration Utility.

Chapter 3, “After You Install Progress Dynamics”

Describes how to set up and start your Progress Dynamics framework to develop and run applications.

Appendix A, “Installing and Viewing Progress Dynamics Documentation”

Describes how to install and view the online Progress Dynamics documentation.

Typographical conventions

This manual uses the following typographical conventions:

- **Bold typeface** indicates:
 - Commands or characters that the user types
 - That a word carries particular weight or emphasis
 - Names of user interface elements
- *Italic typeface* indicates:
 - Progress variable information that the user supplies
 - New terms
 - Titles of complete publications
- Monospaced typeface indicates:
 - Code examples
 - System output
 - Operating system filenames and pathnames

The following typographical conventions are used to represent keystrokes:

- Small capitals are used for Progress key functions and generic keyboard keys.

END-ERROR, GET, GO
ALT, CTRL, SPACEBAR, TAB

- When you have to press a combination of keys, they are joined by a dash. You press and hold down the first key, then press the second key.

CTRL-X

- When you have to press and release one key, then press another key, the key names are separated with a space.

ESCAPE H
ESCAPE CURSOR-LEFT

Progress messages

Progress displays several types of messages to inform you of routine and unusual occurrences:

- Execution messages inform you of errors encountered while Progress is running a procedure (for example, if Progress cannot find a record with a specified index field value).
- Compile messages inform you of errors found while Progress is reading and analyzing a procedure prior to running it (for example, if a procedure references a table name that is not defined in the database).
- Startup messages inform you of unusual conditions detected while Progress is getting ready to execute (for example, if you entered an invalid startup parameter).

After displaying a message, Progress proceeds in one of several ways:

- Continues execution, subject to the error-processing actions that you specify, or that are assumed, as part of the procedure. This is the most common action taken following execution messages.
- Returns to the Progress Procedure Editor so that you can correct an error in a procedure. This is the usual action taken following compiler messages.

- Halts processing of a procedure and returns immediately to the Procedure Editor. This does not happen often.
- Terminates the current session.

Progress messages end with a message number in parentheses. In this example, the message number is 200:

```
** Unknown table name table. (200)
```

Use Progress online help to get more information about Progress messages. Many Progress tools include the following Help menu options to provide information about messages:

- Choose **Help**→**Recent Messages** to display detailed descriptions of the most recent Progress message and all other messages returned in the current session.
- Choose **Help**→**Messages**, then enter the message number to display a description of any Progress message. (If you encounter an error that terminates Progress, make a note of the message number before restarting.)
- In the Procedure Editor, press the **HELP** key (**F2** or **CTRL-W**).

Before You Install Progress Dynamics

This chapter provides information about what you need to do before you install Progress Dynamics® software on your system, as described in the following sections:

- [Checklist of installation tasks](#)
- [System requirements](#)
- [Preinstallation tasks](#)
- [Preinstallation tasks for upgrades](#)

1.1 Checklist of installation tasks

This section summarizes the steps you need to follow depending on whether you are:

- [Installing Progress Dynamics for the first time.](#)
- [Upgrading Progress Dynamics.](#)

1.1.1 Installing Progress Dynamics for the first time

Here is a checklist that summarizes the tasks you must follow if you have not previously installed Progress Dynamics:

Before installing

- ☐ Install the prerequisite software:
 - Progress® ProVision® Plus Version 9.1D or 9.1E (with the latest patch).
 - Internet Explorer Version 5.5 (or later) Web browser (Version 6.0 is recommended).
 - A Web server.
- NOTE:** The Web browser and Web server are required only if you intend to develop browser-based applications. [Progress Dynamics Web Development Guide](#) has more information about these requirements.
- ☐ Obtain a site ID and register your Progress Dynamics databases. For more information, see the [“Registering your Progress Dynamics site and Repositories”](#) section.
- ☐ Read the hard copy release notes that come with the Progress Dynamics Installation CD-ROM.
- ☐ Close any Windows programs that are running.

Installing

- ☐ Run the InstallShield Program. See the [“Running the InstallShield program”](#) section in [Chapter 2, “Installing Progress Dynamics.”](#)
- ☐ Run the Dynamic Configuration Utility (starts automatically once the InstallShield program finishes). See the [“Running the Progress Dynamics Configuration Utility”](#) section in [Chapter 2, “Installing Progress Dynamics.”](#)

After installing

- ☐ Edit your services file to point to the icfdb Repository and your application databases (for client networking). See the [“Editing your Windows services file”](#) section in [Chapter 3, “After You Install Progress Dynamics.”](#)
- ☐ For Web development, test the Broker/Agent setup, Managers, and startup page. See *Progress Dynamics Web Development Guide* for more information. See the [“Setting up for Web development”](#) section in [Chapter 3, “After You Install Progress Dynamics.”](#)
- ☐ Start Progress Dynamics initially as Admin (default login) so that the DCU can load the Repository data. See the [“Starting Progress Dynamics”](#) section in [Chapter 3, “After You Install Progress Dynamics.”](#)

1.1.2 Upgrading Progress Dynamics

The checklist that follows summarizes the tasks you must perform to upgrade from a previous version of Progress Dynamics to Version 2.1B.

Follow these steps when you want to keep the previous version installed and configured on your machine until the entire upgrade and installation process is complete. Therefore, it is important to install Progress Dynamics to Version 2.1B in a new directory so the installation does not overwrite the files for the previous version.

You can install two versions of Progress Dynamics on the same machine if they are different version numbers. For example, you can have an instance of Version 2.1A and 2.1B installed on the same machine. You **cannot** install multiple instances of the same version on the same machine. For example, you cannot install multiple instances of 2.1B on a single machine. (However, you can have multiple repositories for the same version on the same machine.)

NOTE: The information in this section is for users who are upgrading from Progress Dynamics Version 2.0 or 2.1A to Version 2.1B. For information on upgrading from earlier versions, go to the following Web page:

http://psdn.progress.com/library/progress_dynamics/index.ssp

Before installing

- ☐ Install the prerequisite software:
 - Progress ProVision Plus Version 9.1D (with the latest patch).
 - Internet Explorer Version 5.5 (or later) Web browser (Version 6.0 is recommended).
 - A Web server.

NOTE: The Web browser and Web server are required only if you intend to develop browser-based applications.

- ☐ Create a Progress Dynamics Version 2.1B working directory. See the [“Set up the Version 2.1 working environment”](#) section.
- ☐ Make a copy of the `icfdb` Repository database from the previous version and place it into the Progress Dynamics Version 2.1B working directory you just created. See the [“Set up the Version 2.1 working environment”](#) section.
- ☐ Shut down all AppServers, WebSpeed Brokers, and other clients that are directly accessing the Progress Dynamics Repository.
- ☐ Read the hard copy release notes that come with the Progress Dynamics Installation CD-ROM.
- ☐ Close any Windows programs that are running.

Installing

- ☐ Run the InstallShield Program. (Install Version 2.1 on the same machine that hosts the previous version of Progress Dynamics. However, you **must** install Version 2.1 in a directory different from the installation directory for the previous version of Progress Dynamics.) See the [“Running the InstallShield program”](#) section in [Chapter 2, “Installing Progress Dynamics.”](#)
- ☐ Run the Dynamic Configuration Utility (starts automatically once the InstallShield program finishes). See the [“Running the Progress Dynamics Configuration Utility”](#) section in [Chapter 2, “Installing Progress Dynamics.”](#)

After installing

- ☐ Edit your services file to point to the icfdb Repository and the application databases for both versions of Progress Dynamics. You must do this if you are running servers for the databases. See the [“Editing your Windows services file”](#) section in [Chapter 3, “After You Install Progress Dynamics.”](#)
- ☐ For Web development, test the Broker/Agent setup, Managers, and startup page. See [Progress Dynamics Web Development Guide](#) for more information.
- ☐ If you customized the icfconfig.xml file in the prior version, you must edit this file so that you can start Progress Dynamics Version 2.1B. See the [“Edit the Progress Dynamics XML configuration file”](#) section in [Chapter 3, “After You Install Progress Dynamics.”](#)
- ☐ Start Progress Dynamics initially with a client/server connection from a GUI client **and** login as Admin (default login) so that the DCU can load the Repository data. See the [“Starting Progress Dynamics”](#) section in [Chapter 3, “After You Install Progress Dynamics.”](#)
- ☐ Recompile all of your application code. See the [“Recompile application code”](#) section in [Chapter 3, “After You Install Progress Dynamics.”](#)

1.2 System requirements

This section describes the system requirements for a Progress Dynamics Version 2.1B installation. System requirements include:

- [Supported platforms](#)
- [Software prerequisites](#)

1.2.1 Supported platforms

Progress Dynamics is a Windows-only release. The Progress Dynamics Installation CD-ROM lets you install all of the components on one Windows-based client machine, including a development AppServer for the Progress Dynamics Repository. If you prefer, you can choose not to install the Repository and AppServer on the client machine. Instead, you can set up the Repository and AppServer on a separate machine, configuring the client to reference them as needed.

Progress Dynamics Version 2.1B runs on the following Windows platforms:

- Windows NT/Intel 4.0
- Windows 2000
- Windows XP
- Citrix Metaframe
- Windows 98

To install the Repository on a UNIX AppServer, you must have an existing Windows Progress Dynamics installation from which you can deploy the Repository and server code to the target AppServer environment. For more information on deploying the Repository and code, see the deployment chapter in *Progress Dynamics Administration Guide*.

1.2.2 Software prerequisites

Before you can install and configure Progress Dynamics on your system, you must have Progress ProVision Plus Version 9.1D installed with the latest Progress Version 9.1D patch level on the client and any AppServer machines. To identify and find more information on installing the latest patch level for Progress Version 9.1D in your machine environment, go to the Progress Patches Web page (<http://www.progress.com/patches>).

If you plan to develop Web applications with Progress Dynamics, you must have the following software installed on your machine:

- Internet Explorer Version 5.5 (or later) Web browser. (Internet Explorer Version 6.0 is recommended.)
- A Web server.

NOTE: If you use Roundtable™, see the information on the following Web site:
http://psdn.progress.com/library/progress_dynamics/

1.3 Preinstallation tasks

Before you install Progress Dynamics, you must:

- Read the hard copy release notes that come with the Progress Dynamics Installation CD-ROM. They might contain information that replaces or supplements the installation information in this chapter.
- If you plan to create a Dynamics ICFDB Repository database on a remote machine (that is, a machine other than the one on which you are running the Progress Dynamics install program), you first need to use the PRODB utility to create an empty database on the remote machine. For more information on the PRODB utility, see the Version 9.1D *Progress Database Administration Guide and Reference*.
- If you plan to develop applications for the Web with Progress Dynamics, you must start the Web server that you plan to use.
- Close any Windows programs you have running.
- **If you are a new user**, you must obtain a site ID and register your Progress Dynamics databases. For more information, see the “[Registering your Progress Dynamics site and Repositories](#)” section.

1.3.1 Registering your Progress Dynamics site and Repositories

The Dynamics Site Number Allocation application is a free service for allocating site numbers for your Progress Dynamics installation. Before installing and configuring Progress Dynamics on your system, go to <http://www.progress.com/dynamics/sitenumber> and do the following:

1. **Register your Progress Dynamics site with a unique site code (that you define).** A site code uniquely identifies a Progress Dynamics site. A site is a location where the Dynamics software is installed. There are two types of sites: development sites where you develop Dynamics applications, and end-user sites where you deploy Dynamics applications. A site is uniquely identified with a site code that you define. For example, the site code could be your company or organization code, or (if you are registering as an individual) your name.

2. **Register each Progress Dynamics Repository at your site with a unique site identification number.** A site identification number uniquely identifies a Dynamics Repository. More importantly, it ensures the integrity of Dynamics Repository data among Dynamics sites and applications, worldwide, as well as between versions of Progress Dynamics. You need a site number for each Dynamics Repository at an individual site.

CAUTION: If you do **not** register a unique site number for each individual Progress Dynamics Repository at your site, deploying object data you created in that Repository could cause that data to become lost or corrupted.

You can allocate individual site numbers as you need them, or allocate a block of site numbers to keep in reserve. When allocating an individual site number, you can enter a specific site number or let the control automatically generate one for you. When allocating a block of site numbers, you can enter a starting site number value and the number of site numbers you want to allocate. You can also let the application automatically generate a starting site number value for you. If you specify a site number that already exists, the application will display a message.

1.4 Preinstallation tasks for upgrades

This section describes the tasks you must complete before beginning the process of upgrading a Progress Dynamics application to Version 2.1. The following sections describe the prerequisite tasks:

- [Back up databases](#)
- [Set up the Version 2.1 working environment](#)

NOTE: The recommended upgrade is from Progress Dynamics Version 2.0 or 2.1A to Version 2.1B. This manual does not include information on upgrading from Progress Dynamics Version 1.1A. For information on upgrading from earlier versions, go to: http://psdn.progress.com/library/progress_dynamics/

1.4.1 Back up databases

Before you do anything else, back up existing icfdb and application databases. Use the PROBKUP utility, which is described in *Progress Database Administration Guide and Reference*.

1.4.2 Set up the Version 2.1 working environment

To set up the Version 2.1 working environment prior to the upgrade:

- 1 ♦ Create a working directory for the icfdb database that you want to upgrade.

Typically, the working directory for the upgrade will be a folder under the Progress Dynamics Version 2.1 working directory. For example:

```
C:\Dynamics21b\WRK\databases\icfdb\
```

- 2 ♦ Copy the existing icfdb database to the working directory that you created in Step 1.

You can use any of a number of database utilities, including the Data Dictionary, PROCOPY, PRODB, and PROEST. See *Progress Database Administration Guide and Reference* for more information.

- 3 ♦ Copy the initialization file from dynamics21b_install_dir/bin/icf.ini to the working directory that you created in Step 1. For example:

```
C:\Dynamics21b\WRK\databases\icfdb\icf.ini
```

- 4 ♦ Edit the icf.ini file so that it is similar to the icf.ini file for the previous release.

Make sure that the PROPATH points to the **working copy** of your icfdb (that is, the icfdb that you want to upgrade) and not to your original or backup copies.

- 5 ♦ Create a working directory for your application database. For example:

```
C:\Dynamics21b\WRK\databases\sports2000\
```

- 6 ♦ Copy the application database to the directory you created in Step 5.
- 7 ♦ If you are upgrading from a previous version of Progress Dynamics, create a working copy of the application code from the previous version. Application code must be recompiled when you upgrade.

You should create a working copy of the source code (.p, .w, and .i files) relevant to your application. These files are usually stored in the product module folders that you created during application development.

Do not copy compiled code (the .r files). They will not run under Version 2.1 and could be a source of confusion.

Installing Progress Dynamics

This chapter describes how to install and configure Progress Dynamics Version 2.1B and includes the following sections:

- [Installation overview](#)
- [Running the InstallShield program](#)
- [Running the Progress Dynamics Configuration Utility](#)

2.1 Installation overview

The installation of Progress Dynamics is typically seamless from start to finish, but consists of two distinct parts:

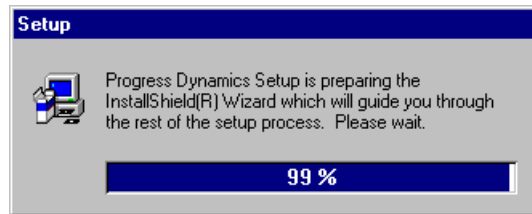
1. An InstallShield® executable that:
 - Creates and loads product directories with Dynamics code files (for the Tools, ADM, and Managers).
 - Creates the Dynamics program folder with basic shortcuts.
 - Adds all necessary registry entries to support this installation.
2. A Progress 4GL utility, the Progress Dynamics Configuration Utility (DCU) that executes immediately after the InstallShield process finishes, and:
 - Tailors and upgrades the Dynamics Repository database in a new environment.
 - Upgrades an existing Repository from one release to the next.
 - Acts as a framework where you can create a process for upgrading and updating the databases that form part of your applications. (For more information on customizing and extending the DCU, see [Progress Dynamics Administration Guide](#).)

2.2 Running the InstallShield program

To install Progress Dynamics, follow these steps:

- 1 ♦ Read the hard copy release notes, which provide important information on the current Progress Dynamics release.
- 2 ♦ Make sure you have met all the preinstallation requirements. For more information, see [Chapter 1, “Before You Install Progress Dynamics.”](#)

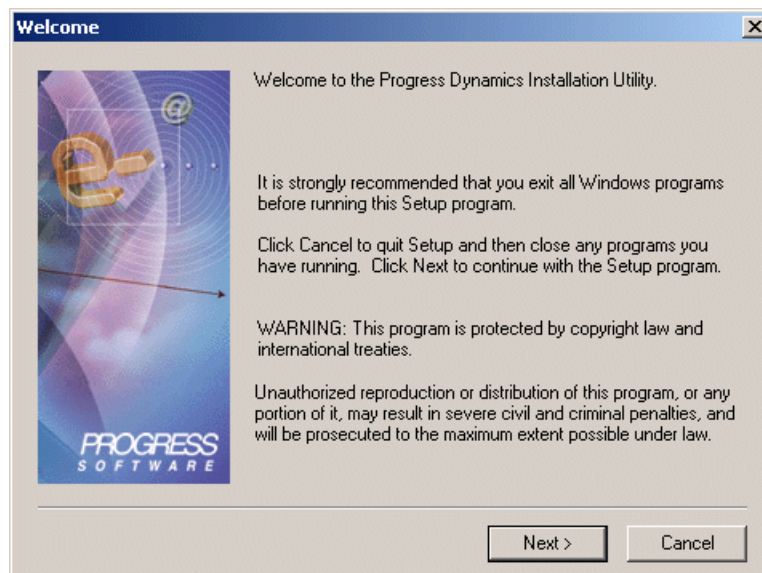
- 3 ♦ Place the Progress Dynamics Installation CD into your CD-ROM drive. The Progress Dynamics Installation Program starts up, displays the Progress splash screen, and prepares to guide you through the rest of the installation, as shown:



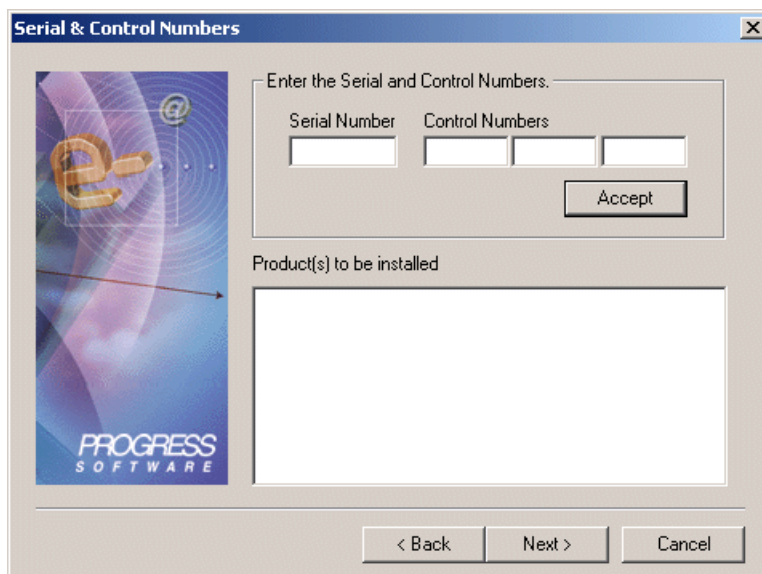
The **Installing Progress Dynamics** window appears, followed by an alert box that reminds you to download the latest Progress Version 9.1D or 9.1E patch, as shown:



- 4 ♦ Choose **OK**. The installer displays a message that indicates it is checking your system requirements as it locates your existing Progress Version 9.1D or 9.1E installation, then displays the **Welcome** screen:

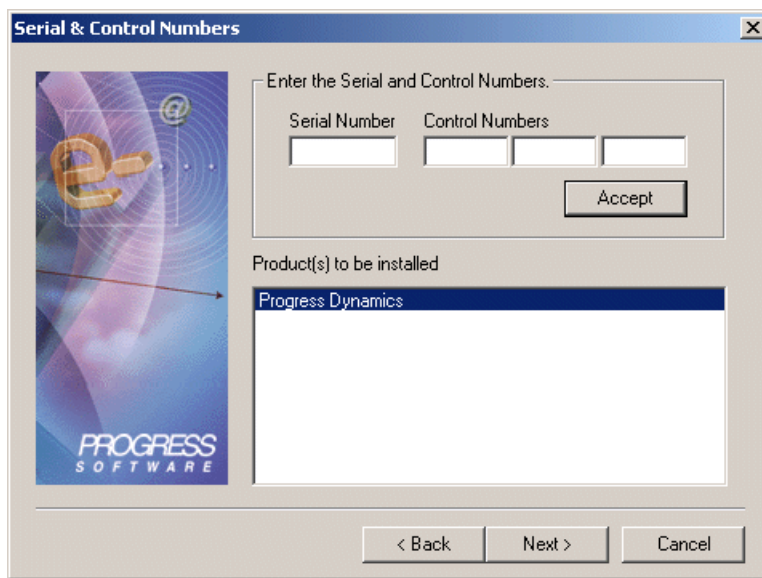


- 5 ♦ Choose **Next**. The **Serial & Control Numbers** screen appears:



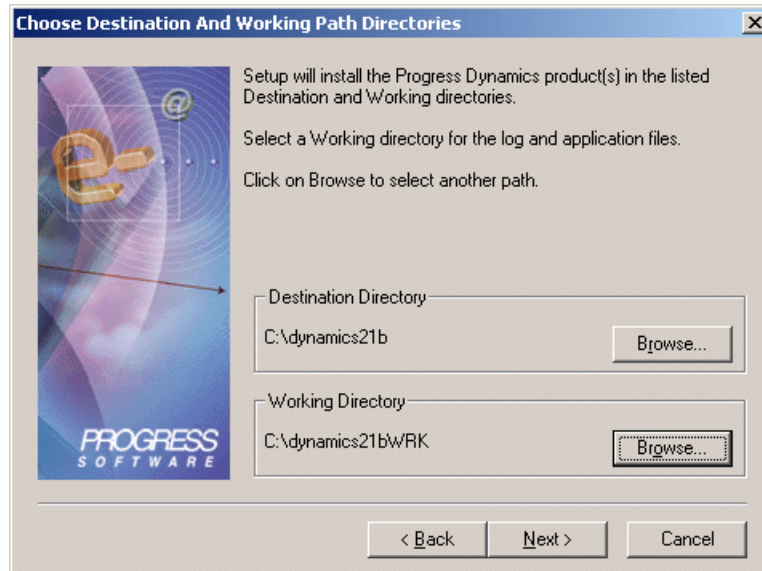
The dialog box titled "Serial & Control Numbers" features a blue header bar with a close button. On the left is a vertical banner with a stylized 'e' logo and the text "PROGRESS SOFTWARE". The main area contains the instruction "Enter the Serial and Control Numbers." followed by two input fields: "Serial Number" and "Control Numbers". The "Control Numbers" field is split into two sub-fields. An "Accept" button is positioned below these fields. At the bottom, a section labeled "Product(s) to be installed" contains an empty list box. Navigation buttons "< Back", "Next >", and "Cancel" are at the bottom right.

- 6 ♦ Enter the product **Serial Number** and **Control Number** on the license addendum that you received with your Progress Dynamics CD-ROM, then choose **Accept**. The Progress Dynamics product name appears in the **Product(s) to be installed** list, as shown:



This dialog box is identical to the one in the previous step, but the "Product(s) to be installed" list box now contains the text "Progress Dynamics" as the first and only entry. The rest of the interface, including the input fields and navigation buttons, remains the same.

- 7 ♦ Choose **Next**. The **Choose Destination And Working Path Directories** screen appears:



CAUTION: Do not use the default directories if you are upgrading. If you used the default directories when you installed earlier versions of Progress Dynamics, this installation will overwrite the software, unless you specify different destination and working directories. You must preserve earlier installations in order to upgrade your applications.

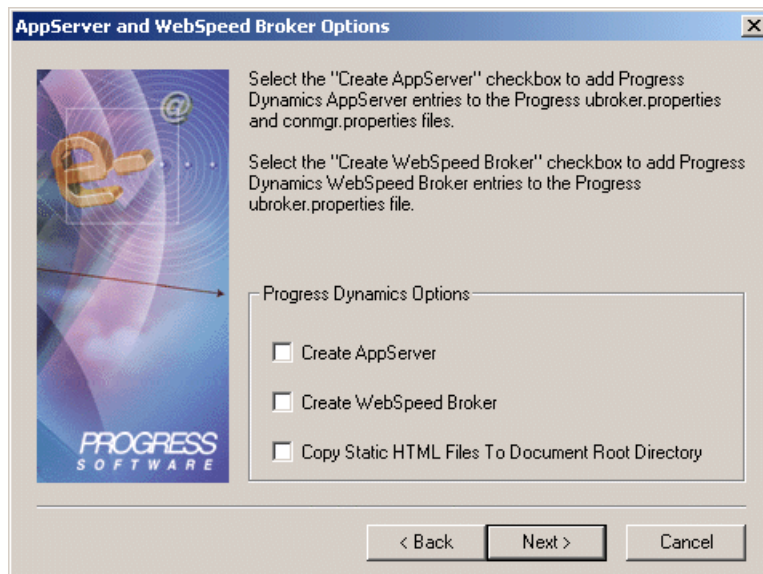
- 8 ♦ If you are installing Progress Dynamics for the first time, accept the defaults or choose **Browse** to specify a different **Destination Directory** or **Working Directory**.

If you are upgrading from a previous release, choose **Browse** to specify a **Destination Directory** that is different from the one you used for the previous version of Progress Dynamics. For the **Working Directory**, specify the Version 2.1B working directory you created in [Chapter 1, “Before You Install Progress Dynamics.”](#) (This is the directory in which you placed a copy of your `icfdb` Repository database from a prior version of Progress Dynamics.)

CAUTION: Make sure that the **Working Directory** is different from, and not in the same path as, the **Destination Directory**.

NOTES:

- The installer does not let you specify your Progress Version 9.1D or 9.1E installation directory as the **Destination Directory** for Progress Dynamics. Progress Dynamics and Progress Version 9.1 share some of the same filenames. If you installed Progress Dynamics into the same directory as Progress Version 9.1, you would overwrite the Version 9.1 files.
 - The **Working Directory** is the default location where, if you chose to create the Dynamics Repository, the installer creates and loads the ICFDB database.
- 9 ♦ Choose **Next**. The installer displays the **AppServer and WebSpeed Broker Options** screen:



If you select them, the specified **Progress Dynamics Options** have the following effects when the InstallShield finishes its part of the installation:

- **Create AppServer** — The installer edits the following properties file to include a local AppServer named icfrepos:

```
Progress9.1D-Install-Dir\properties\ubroker.properties
```

This AppServer supports the icfrepos application service, which accesses the Repository for development. If you do **not** want to use an AppServer for development, or if you want to set up the AppServer manually (for example, on a separate network machine), do **not** select the **Create AppServer** option.

CAUTION: You should use an AppServer for testing, especially if you plan to deploy the application to a Progress Dynamics environment that uses an AppServer. This ensures that you do not compile any schema validation into your user interface (UI) code that will fail to execute in a client session with no database connections.

- **Create WebSpeed Broker** — For developing Web applications with Progress Dynamics, the installer edits the following properties file to include a local WebSpeed broker named `wsdynamics1`:

Progress9.1D-Install-Dir\properties\ubroker.properties

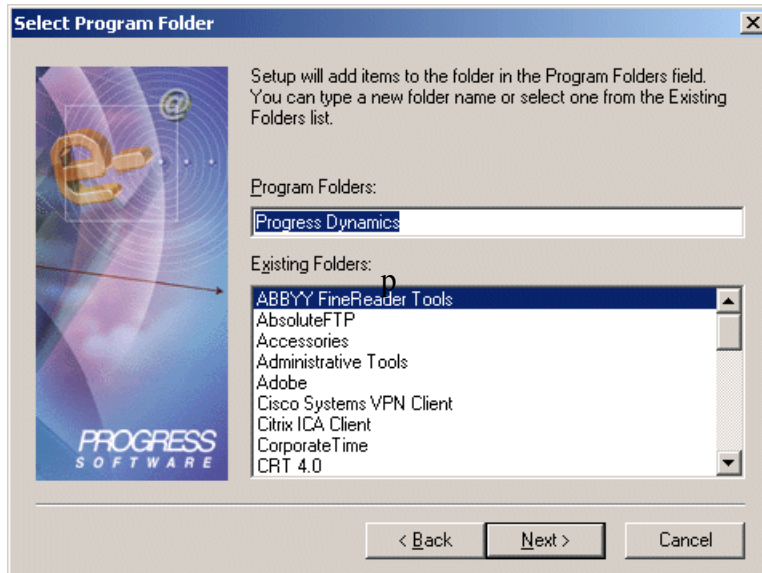
This WebSpeed broker supports the `wsdynamics1` application service, which accesses the Repository at run time. If you want to set up the WebSpeed broker manually (for example, on a separate network machine), do **not** select the **Create WebSpeed Broker** option. For more information about manually creating brokers, see [Progress Dynamics Web Development Guide](#).

NOTE: The Installer creates a backup of your properties files before it makes any changes according to the options you select. You can view or modify these new definitions using Progress Explorer.

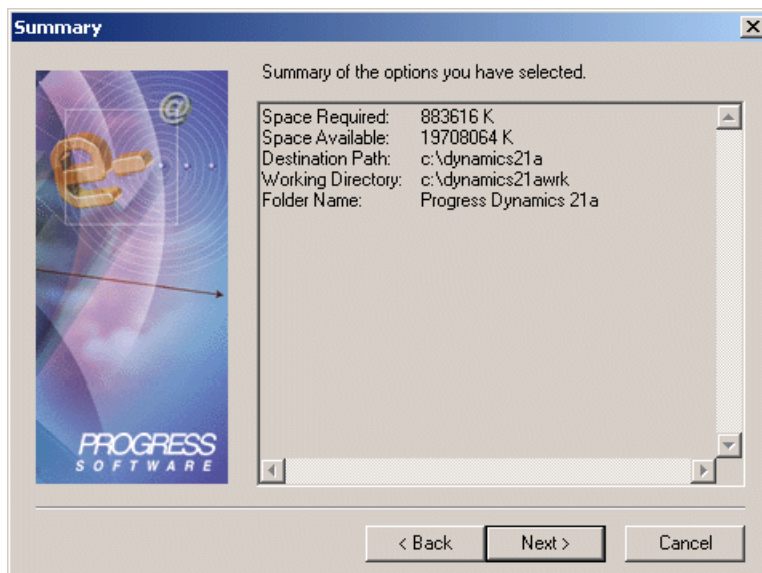
- **Copy Static HTML Files To Document Root Directory** — If you plan to develop Web applications with Progress Dynamics, specify if you want the static Dynamics Web files copied to your Web server's document root directory.

If you choose **not** to copy the static files to the document root directory, you must create a virtual directory on your Web server that points to the location of the static files. The static files physically reside in `install-path\tty\icf\ry`. See [Progress Dynamics Web Development Guide](#) for more information.

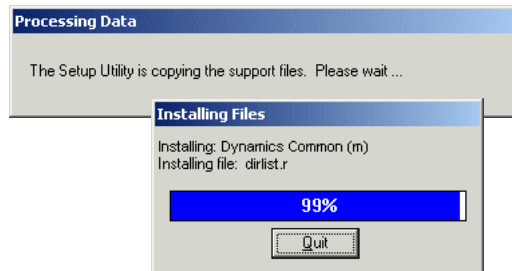
- 10 ♦ After specifying the AppServer and WebSpeed Broker options you want, choose **Next**. The **Select Program Folder** screen appears:



- 11 ♦ After entering or verifying the name of the **Program Folder** for your Progress Dynamics installation, choose **Next**. The **Summary** screen appears. You can accept the final installation options or move back through the installation dialog boxes to change them:

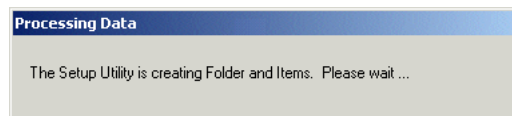


- 12 ♦ When you are ready to accept the listed options, choose **Next**. The installer displays a message about copying support files, then displays the **Installing Files** alert box while it continues with the installation, as shown:



You can stop the installation at any time before it reaches 100% by choosing **Quit**. This causes the installer to stop and exit to the operating system without completing the Progress Dynamics installation.

Once the Progress Dynamics file installation is complete, the installer displays the following information box until it finishes creating the Progress Dynamics Program folder and shortcuts:



The **Complete Setup Done** screen appears when the InstallShield part of the installation is complete.

- 13 ♦ Choose **Finish** to continue with the next part of the installation. The Progress Dynamics Configuration Utility (DCU), which is described in the next section, automatically runs when the installation completes. The DCU installs and configures any specified Repository databases and other Progress Dynamics services required for this installation.

2.3 Running the Progress Dynamics Configuration Utility

To complete the Progress Dynamics installation, Progress provides the Dynamics Configuration Utility (DCU). The DCU is a Progress 4GL program. It completes the installation by building a new `icfdb` Repository database or by upgrading an existing one from a previous release.

NOTE: The DCU does not remove any part of a Progress Dynamics installation.

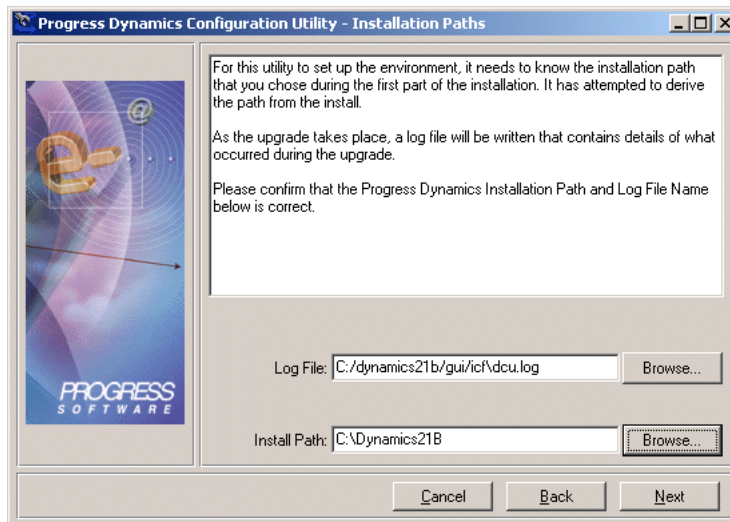
The DCU performs its work in a progressive and re-entrant fashion. If for any reason the DCU does not complete its work, or if you quit the utility before it has a chance to finish, you can rerun it (from the command line or a shortcut) to complete its work.

Note that you can extend the DCU and use it to install your own applications in either GUI mode or batch mode. For more information about the DCU, see [Progress Dynamics Administration Guide](#).

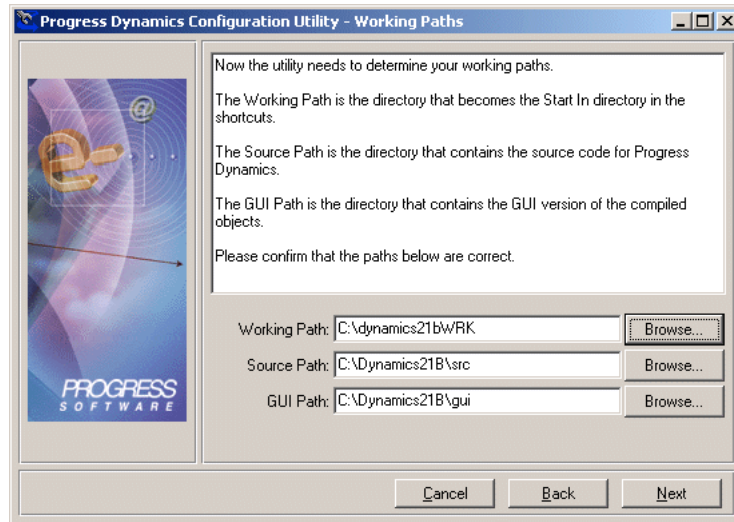
After you choose **Finish** in the InstallShield's **Complete Setup Done** dialog box, a Progress session starts up with an information box indicating that it is parsing the XML file. Then, the DCU wizard starts by displaying the **Progress Dynamics Configuration Utility—Welcome** dialog box.

To complete the DCU wizard, follow these steps:

- 1 ♦ Choose **Next**, and the **Install Path** dialog box appears.
- 2 ♦ Enter the path of the directory where Progress Dynamics Version 2.1 is installed. The **Install Path** field contains a default entry based on the information you provided when you installed Progress Dynamics, as shown:



- 3 ♦ Enter the path for the DCU log file. The **Log File** field contains a default pathname.
- 4 ♦ Choose **Next** and the **Working Paths** dialog box appears.
- 5 ♦ Enter the path information in the **Working Path**, **Source Path** and **GUI Path** fields. The fields contain default entries based on the information you provided when you installed Progress Dynamics, as shown:

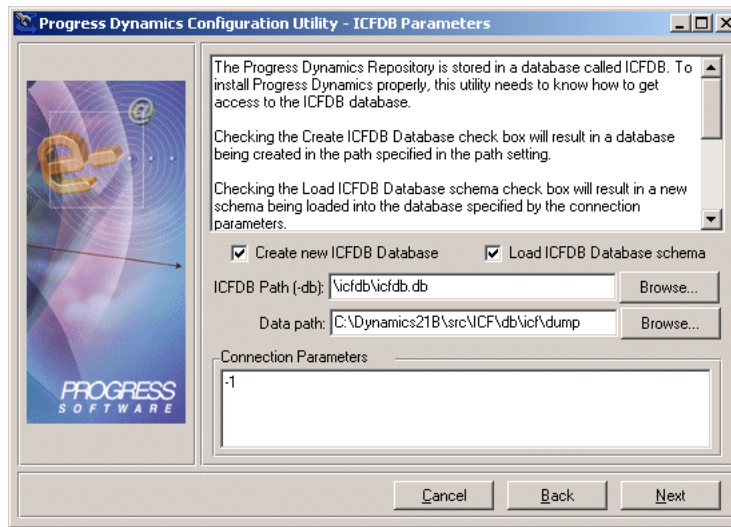


NOTE: The **Working Path** must **not** be under your Progress installation directory or your Progress Dynamics installation directory. Otherwise, you can lose all of your work during future installs and upgrades of these products. (The current example assumes that Progress Version 9.1D is installed in a separate subdirectory, such as C:\Progress\V91d.)

- 6 ♦ After you enter the appropriate path information, choose **Next**. The **ICFDB Parameters** dialog box appears.

- 7 ♦ Enter the path of your icfdb database and the database connection parameters.

The following figure shows connection parameters for single user mode, however, the DCU upgrade can also run with a network connection to the icfdb database:



NOTE: If you run the DCU with the `-icfparam DCUSCRIPTFILE` option, the DCU does **not** update the repository, but writes the repository information to the specified DCU script file (and site data file, if specified) for use by the batch mode DCU. For more information on the batch mode DCU, see [Progress Dynamics Administration Guide](#).

For more information on connection parameters, see the Progress Version 9.1D or 9.1E *Progress Startup Command and Parameter Reference*.

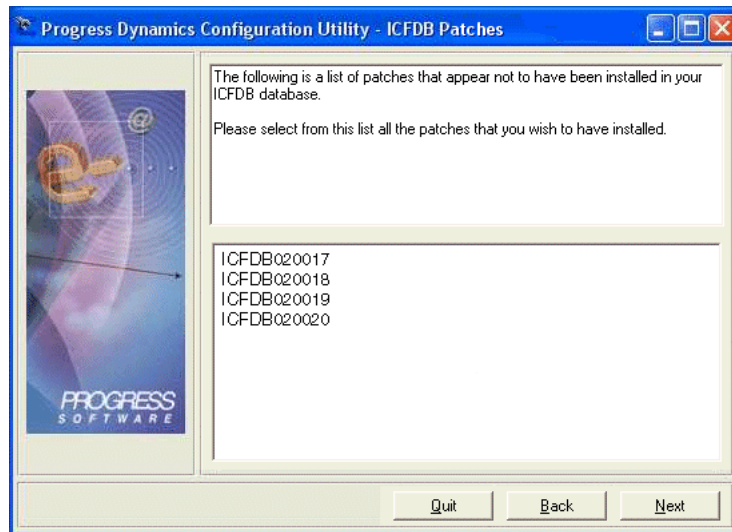
If you try to use the **Create New ICFDB Database** option to create a database on a remote machine, you will get an error message. To load the icfdb schema to a remote database, you first need to create the database on the remote machine by starting a Progress Version 9.1D or 9.1E client and running the PRODB utility. For more information on the PRODB utility, see the Version 9.1 *Progress Database Administration Guide and Reference*.

CAUTION: If you are upgrading, you should remove the check marks from the **Create new ICFDB Database** and the **Load ICFDB Database schema** options.

Also, note the following if you are upgrading:

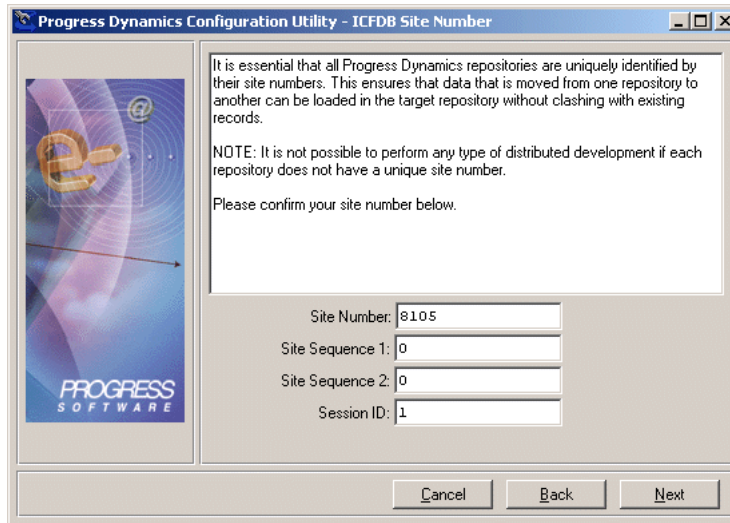
- a) If you check only the **Create new ICFDB Database** option, the DCU automatically loads the database schema as well. The DCU also deletes any database that already exists in the specified `icfdb` path and creates a new one.
 - b) If you check only the **Load ICFDB Database schema** option, the DCU treats any existing `icfdb` as if it was empty and loads the schema.
- 8 ♦ After you enter the appropriate information, choose **Next**. The **ICFDB Patches** dialog box appears if you are upgrading. If this is a new installation, the **ICFDB Patches** dialog box does not appear and you can go to [Step 11](#).
- 9 ♦ Review the patch information.

The DCU lists the patches needed to upgrade your database to the latest level. The list will vary depending on what patch level was added to the previous version of your `icfdb` database. The DCU applies the necessary patches in the correct order, as shown:



- 10 ♦ Choose **Next**. The **ICFDB Site Number** dialog box appears.

- 11 ♦ Enter appropriate values in the **Site Number**, **Site Sequence 1**, **Site Sequence 2**, and **Session ID** fields:



If this is a new installation:

- See the [“Registering your Progress Dynamics site and Repositories”](#) section in [Chapter 1, “Before You Install Progress Dynamics,”](#) for information about obtaining a site number.
- Accept the defaults for the other fields.

If you are upgrading, the DCU transfers sequence values from the previous version of the Repository, or you can obtain these values from the **Set Site Number** dialog box. You can access the **Set Site Number** dialog box from the Progress Dynamics AppBuilder **Build** menu.

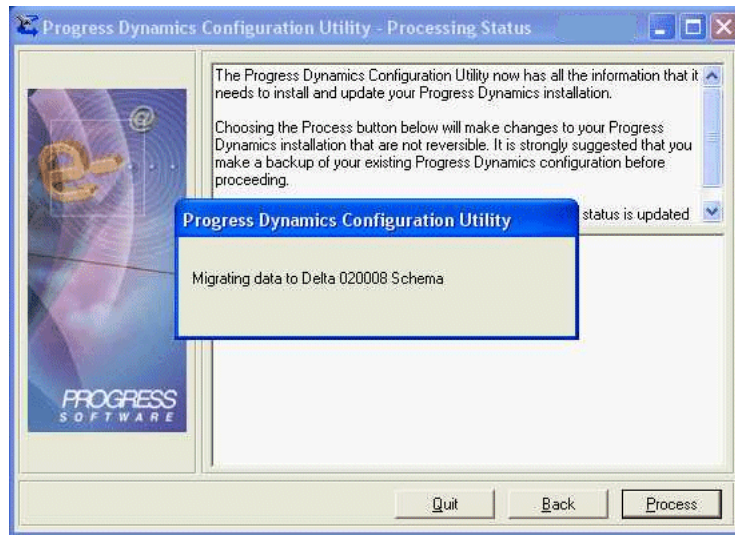
NOTE: Verify that the **Site Sequence 1** value is incremented when you are upgrading. If the **Site Sequence 1** value in this installation is less than the value in the previous release, you will get error messages stating that an Object ID is already used.

- 12 ♦ After you enter the appropriate values, choose **Next**. The **Processing Status** dialog appears.

CAUTION: If you are upgrading, this is a good time to make a backup of your existing Progress Dynamics configuration. You might want to refer back to your prior configuration. The DCU processing that occurs next is irreversible. You will lose configuration information if you do not make a backup before running the DCU.

- 13 ♦ Choose **Process** to start the DCU.

As shown in the following figure, an informational dialog box appears that indicates which upgrade program is currently running:



- 14 ♦ Choose **Finish** when the DCU completes processing.
- 15 ♦ Go to [Chapter 3, “After You Install Progress Dynamics.”](#)

If you are upgrading your installation, be sure to review the information in the [“Additional tasks for upgrades”](#) section in [Chapter 3, “After You Install Progress Dynamics.”](#)

After You Install Progress Dynamics

This chapter describes how to set up and start your Progress Dynamics framework to develop and run applications, as described in the following sections:

- [Editing your Windows services file](#)
- [Editing installed files](#)
- [Additional tasks for upgrades](#)
- [Setting up for Web development](#)
- [Starting Progress Dynamics](#)
- [Securing the Progress Dynamics installation](#)
- [Shutting down Progress Dynamics](#)
- [Uninstalling Progress Dynamics](#)

3.1 Editing your Windows services file

If you connect to the Progress Dynamics Repository database over a network, you must follow these steps to edit your services file to specify the service name and a port number for the `icfdb` Repository database:

- 1 ♦ In a text editor, open your `services` file. By default, the `services` file is in the `C:\WINNT\System32\drivers\etc\directory`. (On Windows XP, the directory is `C:\WINDOWS\System32\drivers\etc\.`)
- 2 ♦ Assign port numbers, using the following format:

`service_name port_number/tcp`

The `service_name` is the name you specify with the `-S` parameter when you start the database. The `port_number` is a unique four-digit number (one that is not already assigned to another service in the file). For example:

`icfdb 8000/tcp`

- 3 ♦ Add an additional line for each of your application databases, using a unique service name and a unique port number for each one.
- 4 ♦ Save and close the `services` file.

CAUTION: You cannot start two Repositories if both have the same service name (`icfdb`, for example). If you need to run more than one Repository database, each version must have a different service name and a different port number.

3.2 Editing installed files

[Table 3–1](#) lists the files installed by the Progress Dynamics installer program that you can edit to modify configuration settings, add databases, or change paths.

Table 3–1: Progress Dynamics files that you can edit

Filename	Description	Location
icfconfig.xml	An XML file containing the instructions used by the Progress Dynamics Configuration File Manager to start up a specified Progress Dynamics session. For more information, see Progress Dynamics Administration Guide .	<i>install_dir</i> \gui\icf Default: C:\Program Files\Dynamics\gui\icf
startdbs.bat	Starts database servers for the Progress Dynamics Repository by invoking proserve.	<i>install_dir</i> \bin Default: C:\Program Files\Dynamics\bin
stopdbs.bat	Stops database servers for the Progress Dynamics Repository by invoking proshut.	
icf.ini	The Progress Dynamics initialization file (the Progress Dynamics version of the progress.ini file).	
icf.pf	The Progress Dynamics AppBuilder startup parameter file.	<i>install_dir</i> \ Default: C:\Program Files\Dynamics

3.3 Additional tasks for upgrades

If you are upgrading from an earlier version of Progress Dynamics, there are several additional tasks that you need to perform. To ensure that your existing applications run under the newer release, review and complete the tasks described in the following sections:

- [Edit the Progress Dynamics XML configuration file](#)
- [Start a development session](#)
- [Stop and restart Progress Dynamics](#)
- [Update session types](#)
- [Run the Entity Import tool](#)
- [Recompile application code](#)

NOTE: For Repository upgrades where end-users want to save their custom Repository changes, Progress Dynamics provides the Site Data Dump and Load Utility, which end users must use before and after they run the DCU. For more information on this utility, see *Progress Dynamics Administration Guide*.

3.3.1 Edit the Progress Dynamics XML configuration file

The DCU upgrade process is not complete at this point. The DCU needs to run again to apply other upgrade procedures and to update data sets for the newly created `icfdb`. The DCU automatically runs again when you start an administrative session. But before you can login and start an administrative session, you must have an XML configuration file that is compatible with the newer version of Progress Dynamics.

If you did **not** create a new `icfconfig.xml` file (or edit the default) for your application, you can skip this section. You can simply use the standard `install_dir\gui\icf\icfconfig.xml` file that ships with Progress Dynamics to access the upgraded Repository.

However, if you modified or changed the name of the default XML configuration file (for example, you might have a customized XML configuration file in your current directory), you must edit the XML configuration file to make it compatible with your upgraded application. For example, you must add service entries for the new managers and change the connection parameters for your `icfdb` database.

You should only edit the `icfconfig.xml` file for the session type that you use as your administrative session type. That allows you to connect to your Repository with administration privileges. Then you can use the Dynamics Administration tool's **Session** menu options to modify your other session types and regenerate the `icfconfig.xml` file.

To edit your `icfconfig.xml` file:

- 1 ♦ Create a backup copy of `icfconfig.xml` before you edit it.

CAUTION: If you make a mistake in the following steps, you might render your `icfconfig.xml` file unreadable and your Dynamics session might not start. Therefore, creating a backup copy that you can revert to is extremely important.

- 2 ♦ Open your `icfconfig.xml` file in a simple text editor, such as Notepad.
- 3 ♦ Search for the string: `SessionType=ICFDev` where `ICFDev` is the name of the session type that you use for administration tasks. This string should occur inside a session node as follows:

`<session SessionType=ICFDev>`

Immediately following the `<session>` node is a `<properties>` node.

- 4 ♦ Scan down the file until you pass the end of the properties node, which is denoted by the end properties tag (`</properties>`).

Immediately following the `<properties>` node is a `<services>` node. The services node contains the list of services that should be connected when the session starts. Among them is a `<service>` node for each of the databases and AppServers that are connected to this session. Each service node is contained within a start service `<service>` and end service `</service>` tag.

- 5 ♦ Search for a `<cServiceName>` tag with the value `rvdb`. If it exists, remove the entire `<service>` node for the RVDB service type from the file.

The `rvdb` database is used in Progress Dynamics Version 1.1A. It became obsolete at Version 2.0A. There should be no references to it in any of your configuration files.

- 6 ♦ Scan down until you find the first end managers (</managers>) tag.
- 7 ♦ Insert the following XML statements immediately before that line:

```
<manager>
  <cManagerName>RIManager</cManagerName>
  <cFileName>ry/app/ryrisrvrp.p</cFileName>
  <cHandleName>RI</cHandleName>
  <cSuperOf/>
</manager>
<manager>
  <cManagerName>CustomizationManager</cManagerName>
  <cFileName>ry/app/rycusrvrp.p</cFileName>
  <cHandleName>NON</cHandleName>
  <cSuperOf/>
</manager>
<manager>
  <cManagerName>RepositoryDesignManager</cManagerName>
  <cFileName>ry/app/rydessrvrp.p</cFileName>
  <cHandleName>NON</cHandleName>
  <cSuperOf/>
</manager>
```

- 8 ♦ Scan down until you find a service node that contains a <cServiceName> tag with the value icfdb.

- 9 ♦ Change the database connection parameters from the values for the earlier version to the appropriate values for the newer version.

The arguments for the `-db` and the `-S` parameters should be the `icfdb` that you upgraded through the DCU. The bold text in the following code shows the changes to the `icfdb` services entry:

```
<service>
  <cServiceType>Database</cServiceType>
  <cServiceName>ICFDB</cServiceName>
  <cPhysicalService>ICFDBn</cPhysicalService>
  <cConnectParams>-db icfdbV21B -N TCP -H localhost
  -S icfdbV21B</cConnectParams>
  <lDefaultService></cConnectParams>
  <lCanRunLocal></lCanRunLocal>
  <iStartOrder></iStartOrder>
</service>
```

NOTE: Since the upgrade simultaneously opens a large number of records, it is possible that you might get an error stating that the record lock table is too small. In that case, you must set the Lock Table Entries parameter (`-L`) to a very large value. (A value of 500,000 should be adequate.) See *Progress Startup Command and Parameter Reference* for more information.

- 10 ♦ Save the edited `icfconfig.xml` file.
- 11 ♦ Place the `icfconfig.xml` file in a directory that is included in your Version 9.1D `PROPATH`.

3.3.2 Start a development session

The DCU needs to run again to apply other upgrade procedures and to update data sets for the newly created `icfdb`. The DCU automatically runs again when you start a session that has administrative privileges. By default, you can run the development session (ICFdev) with administrative privileges. When you ran the DCU the first time, it wrote information to the Repository, which it now uses to complete the upgrade.

To update data sets, Progress Dynamics applies Application Dynamic Object (ADO) files to the Repository. ADO files are XML documents that have a `.ado` filename extension.

After you complete the tasks described in the [“Edit the Progress Dynamics XML configuration file”](#) section, you should be able to start a session that connects to the `icfdb` that the DCU upgraded.

To start an administrative session, follow these steps:

- 1 ♦ Start the DB servers for the newer version of Progress Dynamics, if they are not already running.
- 2 ♦ Start an administrative session, logging in as **admin**.

If you start a Progress Dynamics Development session from a desktop shortcut, check the properties to make sure that the value of `ICFSESSTYPE` is set to your administrative session type (usually `ICFDev`). Also, verify that the `-ini` and `-pf` parameters point to the Version 2.1B initialization and startup parameter files. For example:

```
C:\Program Files\Progress91D\bin\prowin32.exe -p icfstart.p  
-pf "C:\Program Files\Dynamics21B\icf.pf"  
-ini "C:\Program Files\Dynamics21B\bin\icf.ini"  
-icfparam ICFSESSTYPE=ICFDev
```

After you log in, the DCU starts, runs upgrade programs, and applies ADOs. The DCU displays a status window that indicates its progress.

This phase of the upgrade involves running a large number of procedures that can be very time consuming. The actual duration depends on the size and complexity of your application.

3.3.3 Stop and restart Progress Dynamics

After the DCU loads all of the ADOs, you will be in a Dynamics AppBuilder session. Before you can continue, you must apply the changes you made up to this point by stopping and restarting Progress Dynamics. Log out of the current session. When you log in again, you must start an administrative session, as described in the [“Start a development session”](#) section.

3.3.4 Update session types

In the “[Edit the Progress Dynamics XML configuration file](#)” section, you updated the session that you use to administer your Repository. Now, you must update any other session types that apply to your application.

NOTE: If you did **not** create a new `icfconfig.xml` file (or edit the default) for your application, you can skip this section. You can simply use the standard `icfconfig.xml` file that ships with Progress Dynamics to access the upgraded Repository.

From the **Dynamics Administration Tool Session** menu, access the **Session Type Control** and modify your existing session types. After modifying your session types, regenerate the XML configuration file. (You can also edit the configuration file manually, but manual editing is more error prone.) See [Progress Dynamics Administration Guide](#) for more information about defining, modifying, and managing sessions.

Modify your other session types as follows:

1. Remove the RVDB service from all session types that have it. It became obsolete at Version 2.0A. There should be no references to it in any of your session types.
2. Add the Reference Integrity Manager (**RIManager**) to all session types that make database connections. The manager’s filename is `ry/app/ryrisrvrp.p`.
3. Add the **CustomizationManager** to all session types that make use of the customization facilities and all development session types and server side (AppServer and WebSpeed) session types. The server side manager is `ry/app/rycussrvrp.p`, and the client side manager is `ry/app/rycusc1ntp.p`.
4. Add the **RepositoryDesignManager** to all development session types that construct objects and modify them using the AppBuilder toolset. The manager’s filename is `ry/app/rydessrvrp.p`.

The Repository Design Manager is only needed for development session types. It is not needed and should not be included in deployment sessions. It will only add unnecessary overhead when the application runs.

If you plan to deploy your application as a browser-based application on the Web, you must create an ICFWS session type. (See [Progress Dynamics Administration Guide](#) and [Progress Dynamics Web Development Guide](#) for more information.) The ICFWS session type must include the following managers:

1. The **RequestManager** (ry/app/ryreqsrvr.p) handles requests coming in from a Web browser.
2. The **UserInterfaceManager** (ry/app/ryuimsrvr.p) handles the interactions with the user interface.

The following example shows entries for all the new Version 2.x managers as they appear in the XML configuration file:

```
<manager>
  <cManagerName>RIManager</cManagerName>
  <cFileName>ry/app/ryrisrvr.p</cFileName>
  <cHandleName>RI</cHandleName>
  <cSuperOf/>
</manager>
<manager>
  <cManagerName>CustomizationManager</cManagerName>
  <cFileName>ry/app/rycussrvr.p</cFileName>
  <cHandleName>NON</cHandleName>
  <cSuperOf/>
</manager>
<manager>
  <cManagerName>RepositoryDesignManager</cManagerName>
  <cFileName>ry/app/rydessrvr.p</cFileName>
  <cHandleName>NON</cHandleName>
  <cSuperOf/>
</manager>
<manager>
  <cManagerName>RequestManager</cManagerName>
  <cFileName>ry/app/ryreqsrvr.p</cFileName>
  <cHandleName>NON</cHandleName>
  <cSuperOf/>
</manager>
<manager>
  <cManagerName>UserInterfaceManager</cManagerName>
  <cFileName>ry/app/ryuimsrvr.p</cFileName>
  <cHandleName>NON</cHandleName>
  <cSuperOf/>
</manager>
```

3.3.5 Run the Entity Import tool

When the DCU runs after the initial installation, it displays an important note indicating that you must run the Entity Import tool with **Override all attributes from schema** selected. Your upgraded application database might not run correctly if you do not run the Entity Import tool.

Start the Entity Import tool from the main menu of the Administration Tool. Select **System→Entity Import**.

In later versions of Progress Dynamics, DataFields are used extensively throughout the tools and at run time in Progress SmartDataObjects™ for attributes such as formats, data types, and labels. DataFields are a level of abstraction from the physical data storage. When you upgrade, you must run the Entity Import tool to ensure that Progress SmartObjects™ are created for every entity, with DataField instances representing the fields that belong to the entity.

In addition, due to the increased and fundamental use of DataFields, it is imperative that you keep them up-to-date. Whenever you make schema changes to your application database, you must use the Entity Import tool to update your application's entities and DataFields. You must run the Entity Import tool against the central database for your organization. (If individual developers run the Entity Import tool on their own "satellite" databases, they might generate different Object IDs for the same DataField.)

By default, the Entity Import process does **not** overwrite any local changes you have made to attributes, such as labels, but if the value of your label matches the value of the old schema label, the Entity Import process updates the DataFields appropriately. The Entity Import tool includes an **Override all attributes from schema** toggle box. If you select this option, the Entity Import process overwrites the local changes you made to the values of the entity attributes with the schema values.

If you do **not** update the DataFields, then at run time the SDOs use the old values in the DataFields, thereby regressing your schema changes at run time.

NOTE: The generateDataFields API in the Repository Design Manager supports the overriding of local attribute values with database metaschema values for certain attributes, such as Format, Label, and Help.

3.3.6 Recompile application code

Any static application code (in product modules, for example) must be recompiled in Version 2.1B. In particular, Version 1.1A code will not run in a Version 2.1B environment. However, you should recompile the application code from any previous release.

3.4 Setting up for Web development

If you plan to use Progress Dynamics to create applications for the Web, you should:

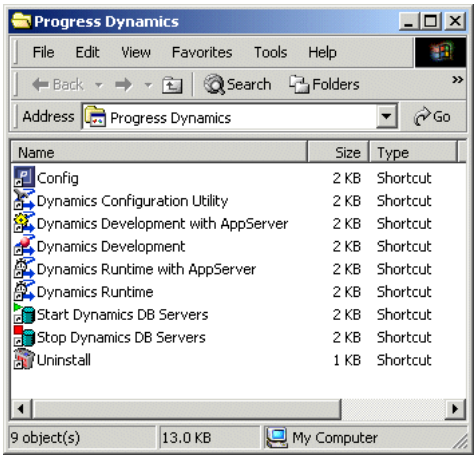
- Test the Broker/Agent Setup.
- Test the Managers.
- Test the StartUp Page.

For detailed information about setting up and creating Web applications with Progress Dynamics, see [Progress Dynamics Web Development Guide](#).

3.5 Starting Progress Dynamics

To start Progress Dynamics, follow these steps:

- 1 ♦ Open the Progress Dynamics program folder using one of the following methods:
 - From the Windows Start menu, choose **Programs**→**Progress Dynamics** to display the Progress Dynamics shortcuts in a menu.
 - Open any shortcut that you have created to the Progress Dynamics program folder, which displays the Progress Dynamics shortcuts:



Initially, these shortcuts include:

- **Config** — For opening the `progress.cfg` configurations file.
- **Dynamics Configuration Utility** — For starting the Progress Dynamics Configuration Utility.
- **Dynamics Development** — For application development while accessing the Repository directly, without using the Repository AppServer.
- **Dynamics Runtime** — For running an application while accessing the Repository directly, without using the Repository AppServer.
- **Dynamics Runtime with AppServer** — For running an application while accessing the Repository indirectly through the Repository AppServer.
- **Start Dynamics DB Servers** — For starting the Progress Dynamics Repository database, `icfdb`.
- **Stop Dynamics DB Servers** — For stopping the Progress Dynamics Repository database, `icfdb`.
- **Release Notes** — For opening and viewing the Progress Dynamics Version 2.1B online release notes.
- **Uninstall** — For uninstalling the Progress Dynamics software. Be sure to stop the Dynamics database server before you select this option.

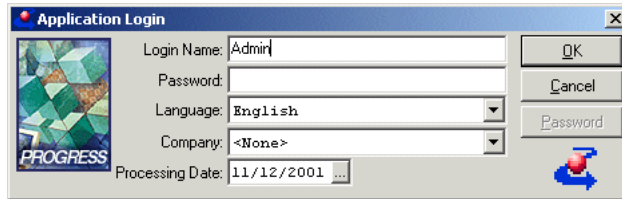
As you become familiar with Progress Dynamics maintenance, you can create similar shortcuts for other types of sessions. For more information about configuring Progress Dynamics sessions, see the chapter on defining and managing sessions in [Progress Dynamics Administration Guide](#).

- 2 ♦ If the database servers required for your Progress Dynamics session are not already auto-started, use one of the following methods to start them:
 - Open the **Start Dynamics DB Servers** shortcut in the program folder to start them.
 - Open the database servers that you require by using the Progress Explorer.
- 3 ♦ If it is not already auto-started, open any AppServer that your Progress Dynamics session requires by using the Progress Explorer, or by using the Progress `asbman` command from the appropriate system command line.

- 4 ♦ Choose the **Dynamics Development** shortcut.

CAUTION: For an upgrade especially, you must choose this shortcut, and **not** the “with AppServer” option. For the DCU to complete the upgrade process, you must log on initially with a client/server or host-based connection (that is, one that uses a direct connection to the Repository database).

The **Powered by Progress Software** splash screen appears followed by the **Application Login** dialog box that you can use to authenticate users:



Initially, Progress Dynamics has one **Login Name** defined, **admin**, with no password. The **Login Name** is not case sensitive.

- 5 ♦ In the **Login Name** field, type **Admin**.

NOTE: For an upgrade, you must initially log on as **Admin** for the DCU to complete the upgrade of the Repository. If you no longer have a user called **Admin**, you must log on as a user who is defined in the **Progress Dynamics User Maintenance** window with **Development User** and **Maintain System Data** options checked on.

You can also select a language and organization (Company), and you can set the date that you want Progress Dynamics (or any Progress Dynamics application you run) to maintain as the session date. The default values include:

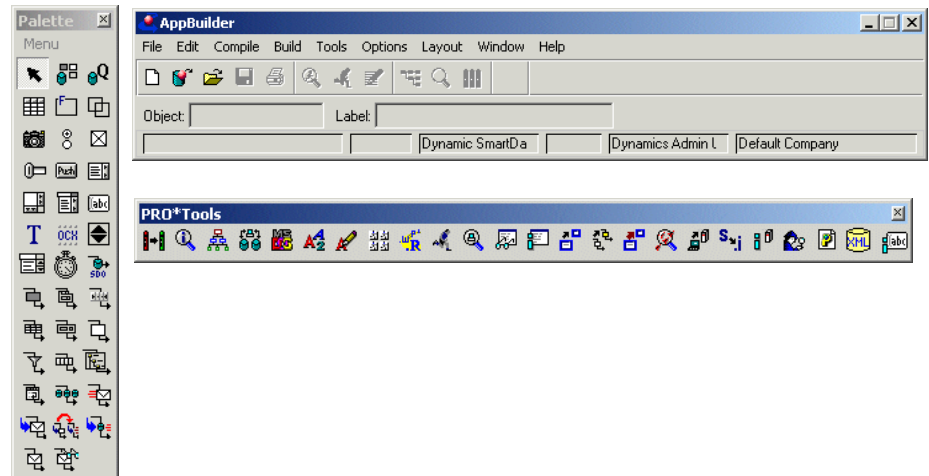
- **Language** — **English**, with several other languages predefined in the list.
- **Company** — **<None>**, which defaults to **Default Company**, the only organization predefined at installation.
- **Processing Date** — Today’s date, as set for your computer, but that you can change for the session by typing into the field or selecting from a pop-up calendar (...).

NOTE: The **Password** button is disabled because you can change your password using the Progress Dynamics Re-Login function only after you have successfully logged in.




- 6 ♦ After you have entered your log on information, choose **OK**.

For an upgrade, the Dynamics Configuration Utility runs in the background. It briefly displays a status box of its progress as it loads in the Repository data. You cannot start any AppServers or WebSpeed Transaction agents against the Repository until the DCU completes this upgrade.

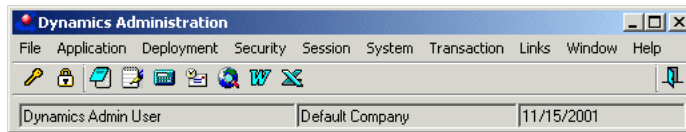
The Progress Dynamics AppBuilder opens displaying the AppBuilder main window, Palette, and PRO*Tools windows, as shown:



This appears very much like the ProVision AppBuilder with some additional controls. You can tell that this is the Progress Dynamics AppBuilder because it:

- Displays the Progress Dynamics window bar icon ().
- Initially displays with the PRO*Tools palette opened.
- Has a Build menu on the menu bar and an Open Object button () on the toolbar.
- Shows the currently logged-in user and company in the status bar.
- Has a SmartTreeView object () on the object Palette.

- 7 ♦ To access Progress Dynamics management functions, choose **Tools→Administration** from the AppBuilder menu bar. This opens the Progress Dynamics Administration tool, as shown:



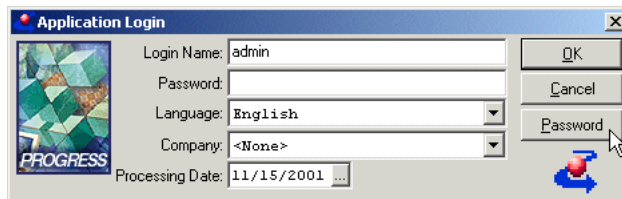
- 8 ♦ If you are upgrading, recompile all your application code to complete the upgrade process.

At this point you can set global run-time options and secure your installation by setting up user authentication. For more information, see the [“Securing the Progress Dynamics installation.”](#) section and the chapter on security in [Progress Dynamics Administration Guide](#).

3.6 Securing the Progress Dynamics installation

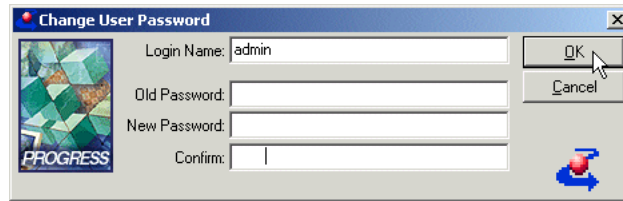
You can secure your Progress Dynamics installation by changing the password on the default admin account. Follow these steps to change the password:

- 1 ♦ After opening a development session and logging into Progress Dynamics, choose **File→Re-Logon** from the menu bar on the AppBuilder window, or on any Progress Dynamics ADE menu controller, such as the Progress Dynamics Administration window. The **Application Login** dialog box appears with the **Password** button enabled:

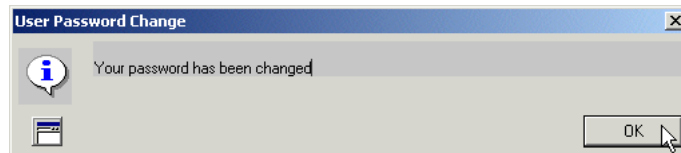


NOTE: **Company** initially displays **<None>** for the Re-Logon function until **Login Name** has a password. Next time you run the Re-Logon function for this user, the default login company appears when you enter the **Password** field.

- 2 ♦ Choose **Password**. The **Change User Password** dialog box appears:

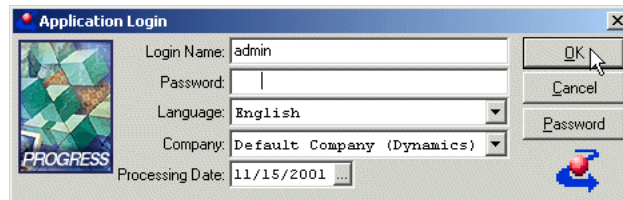
The 'Change User Password' dialog box features a blue title bar with a red close button. On the left is a 'PROGRESS' logo. The main area contains four text input fields: 'Login Name' (pre-filled with 'admin'), 'Old Password', 'New Password', and 'Confirm'. To the right are 'OK' and 'Cancel' buttons. A blue circular arrow icon is in the bottom right corner.

Enter the old password, then enter and confirm the new password, and choose **OK**. If the password entries are valid, the **User Password Change** alert box appears:

The 'User Password Change' alert box has a blue title bar and a light gray background. It displays an information icon (a lowercase 'i' in a circle) next to the text 'Your password has been changed'. An 'OK' button is located in the bottom right corner.

Otherwise, an error message box appears to explain what was wrong and how to change it.

- 3 ♦ Choose **OK** in the **User Password Change** alert box. The **Application Login** dialog box appears:

The 'Application Login' dialog box has a blue title bar and a 'PROGRESS' logo on the left. It contains four input fields: 'Login Name' (pre-filled with 'admin'), 'Password', 'Language' (a dropdown menu currently showing 'English'), and 'Company' (a dropdown menu currently showing 'Default Company (Dynamics)'). Below these is a 'Processing Date' field with the value '11/15/2001' and a small calendar icon. On the right are 'OK', 'Cancel', and 'Password' buttons. A blue circular arrow icon is in the bottom right corner.

- 4 ♦ Now you can log on with a valid username and password, using the new password for the same **Login Name**, and choose **OK** to continue with the session.

3.7 Shutting down Progress Dynamics

To shut down Progress Dynamics, follow these steps:

- 1 ♦ Close the Progress Dynamics AppBuilder. This shuts down all Progress Dynamics tools that you still have open on the Windows desktop.
- 2 ♦ Close any AppServer required only by the Progress Dynamics session using the Progress Explorer or using the Progress `asbman.bat` script from the appropriate system command line.
- 3 ♦ Shut down the WebSpeed agents (optional).
- 4 ♦ Select **Programs→Progress Dynamics→Stop Dynamics DB Servers** to only shut down the database servers required by your Progress Dynamics session, or shut down the database servers individually using the Progress Explorer.

3.8 Uninstalling Progress Dynamics

The Uninstall utility removes all the files created by the InstallShield program in the destination directory.

NOTE: If you edited any of the contents of any of these files, the InstallShield still deletes them. However, if you renamed any of the files, the Uninstall program might fail.

Since the InstallShield program does not create the Repository, the Uninstall utility does not remove the Repository database. (The Dynamics Configuration Utility creates the Repository. If you want to delete the Repository, you must do so manually.)

To uninstall Progress Dynamics, follow these steps:

- 1 ♦ Shut down any Progress Dynamics client sessions that are running.
- 2 ♦ Stop the Progress Dynamics Repository database servers, if they are running.
- 3 ♦ Stop any Repository AppServer that is running.
- 4 ♦ From the Windows Start menu, choose **Programs→Progress Dynamics→Uninstall**. The **Remove Programs from Your Computer** dialog box appears.
- 5 ♦ Choose **OK** when the uninstall successfully completes.

Installing and Viewing Progress Dynamics Documentation

This appendix describes how to install and view the online Progress Dynamics Documentation CD and includes the following sections:

- [Viewing the PDF files](#)
- [Searching the PDF files](#)
- [Manually opening the PDF files](#)
- [Copying the PDF files to your machine](#)
- [Error when inserting the CD](#)

NOTE: You can also view the documentation set in PDF and in dynamic HTML formats on the Progress Web site at <http://www.progress.com/v9/documentation>.

A.1 Viewing the PDF files

The Progress Dynamics PDF Documentation CD contains PDF files of the Progress Dynamics documentation set. The PDF files are viewable with the Adobe Acrobat reader software.

To view the PDF files on the CD, follow these steps:

- 1 ♦ Download and install the latest Acrobat Reader with Search for your platform from the following URL: <http://www.adobe.com/products/acrobat/readstep2.html>

When you download the reader, be sure to select the **Include option for searching PDF files and accessibility support** check box. Selecting this option downloads the Search version of the reader, which lets you search across the entire Progress Dynamics documentation set.

- 2 ♦ If auto-run is enabled when you insert the CD into your CD-ROM drive, the `Start.html` file automatically appears. You can use the links on this page to access the PDF files. If auto-run is not enabled, manually open the `Start.html` file in your Web browser (for best results, use Internet Explorer).

A.2 Searching the PDF files

You can use the **Search** button in the Acrobat Reader to search across all Progress Dynamics PDF files. However, when you click on a link to a book from the `Start.html` file, the PDF file (by default) launches as a plugin to the Web browser. That is, the PDF file appears in the same window as the Web browser. When the Reader is launched as a plugin, the **Search** button is not available. To avoid this, you can configure the Acrobat Reader to launch in a separate window using the procedures documented below. Additionally, testing has shown that you should use Internet Explorer, not Netscape, for the Search to work properly when accessing the PDF files from the `Start.html` file.

A.2.1 Configuring Acrobat Reader Version 5.0 to launch in a separate window

To configure Acrobat Reader Version 5.0 to launch in a separate window, follow these steps:

- 1 ♦ Close your Web browser.
- 2 ♦ Start Acrobat Reader.
- 3 ♦ Choose **Edit→Preferences**. The **Preferences** dialog box appears.
- 4 ♦ In the left pane, select **Options**.
- 5 ♦ Uncheck the **Display PDF in Browser** check box, then choose **OK**.
- 6 ♦ Close Acrobat Reader.
- 7 ♦ Start Internet Explorer and open the `Start.html` file. Click on a link to any manual. The Acrobat Reader launches in a separate window and the **Search** button appears on the Acrobat toolbar.

A.2.2 Configuring Acrobat Reader Version 4.05 to launch in a separate window

To configure Acrobat Reader 4.05 to launch in a separate window, follow these steps:

- 1 ♦ Close your Web browser.
- 2 ♦ Start Acrobat Reader.
- 3 ♦ Choose **File→Preferences→General**. The **General Preferences** dialog box appears.
- 4 ♦ Uncheck the **Web Browser Integration** check box, then choose **OK**.
- 5 ♦ Close Acrobat Reader.

A.2.3 Using the Search button

To use the **Search** button, follow these steps:

- 1 ♦ Start Internet Explorer and open the `Start.html` file.
- 2 ♦ Open a link to any manual. The **File Download** dialog box appears.
- 3 ♦ Select the **Open this File From Current Location** option.
- 4 ♦ Uncheck the **Always Ask before Opening this Type of File** check box.
- 5 ♦ Choose **OK**. The PDF file opens in a separate window.
- 6 ♦ Choose the **Search** button on the Acrobat Reader toolbar and enter your search criteria.
For more information on using the Acrobat Search, choose **Help→Plugin Help→Using Acrobat Search**.

A.3 Manually opening the PDF files

If you do not want to set up Acrobat Reader to launch PDF files in a separate window, you can open the PDF files manually on the CD rather than using the `Start.html` file. The PDF files are located in the following directories:

- **adr** — Contains *Progress Dynamics ADM2 API Reference*.
- **dag** — Contains *Progress Dynamics Administration Guide*.
- **ddg** — Contains *Progress Dynamics Developer's Guide*.
- **dgs** — Contains *Getting Started With Progress Dynamics*.
- **dig** — Contains *Progress Dynamics Installation Guide*.
- **dmr** — Contains *Progress Dynamics Managers API Reference*.
- **dph** — Contains *Progress Dynamics Programming Handbook*.
- **drp** — Contains *Progress Dynamics Repository Reference*.

- **dub** — Contains *Progress Dynamics Product Update Bulletin*.
- **dwg** — Contains *Progress Dynamics Web Development Guide*.
- **woe** — Contains *Welcome to Progress OpenEdge Studio*.

A.4 Copying the PDF files to your machine

If you want to copy the PDF files to your machine, you must copy all files and directories on the CD, in the directory structures defined on the CD. This way, you will retain the ability to search and jump between the PDF files.

A.5 Error when inserting the CD

If you have auto-run enabled on your machine, you might receive the following error message when you insert the CD into your drive:

Could not find the file `..\start.html` file

However, the `Start.html` file does appear. Just choose **OK** for the error message and continue.

Index

A

- admin user 3–14
- Administration window 3–16
- ADOs 3–4
- AppBuilder main window 3–15
- Application login dialog box 3–14
- AppServer
 - Create option 2–6
 - installing with Dynamics 1–5
- Audience vii

B

- Bold typeface
 - as typographical convention viii
- Broker
 - WebSpeed 2–7

C

- Cautions
 - AppServer usage 2–7
 - directory structure 2–5

- Check list
 - installation tasks 1–2
 - upgrade tasks 1–3

- Configuration XML file
 - editing manually 3–3

- Connection parameters
 - icfdb 2–10

- Control numbers 2–4

D

- Data
 - loading ADOs 3–4

- Data sets 3–4

- Database servers
 - starting 3–13
 - stopping 3–18

- DCU. *See* Dynamics Configuration Utility (DCU)

- Destination directory 2–5

- Directories
 - document root 2–7
 - installation 2–5
 - working 2–5

Directory structure 2–5

Document root directory 2–7

Downloading

Version 9.1D patch 2–2

Dynamics Configuration Utility (DCU) 2–1

installation usage 2–9

running 2–10

E

Editing

Services file 3–2

Error messages

displaying descriptions ix

Exiting

InstallShield 2–8

F

Files

icf.ini 3–3

icf.pf 3–3

icfconfig.xml 3–3

properties 2–7

Services 3–2

startdbs.bat 3–3

static HTML 2–7

stopdbs.bat 3–3

ubroker.properties 2–6

H

Help

Progress messages ix

HTML files 2–7

I

icf.ini file

editing manually 3–3

icf.pf file

editing manually 3–3

ICFDB database 1–7, 2–10

creating 2–10

location 2–6

icfrepos AppServer 2–6

ID number

Repository 1–7

Install program

running 2–2

Installation

overview 1–2

installation

overview 2–2

Installation and configuration

directory structure 2–5

securing 3–16

supported platforms 1–5

Installshield program 2–1

Internet Explorer 1–6

Italic typeface

as typographical convention viii

L

License addendum 2–4

Loading

- data 3–4
- remote databases 2–10

Login dialog box 3–14

M

Manual, organization of vii

Messages

- displaying descriptions ix

Monospaced typeface

- as typographical convention viii

O

Overview 1–2

overview 2–2

P

Palette

- AppBuilder 3–15

Parameters

- icfdb startup 2–10

Parsing XML files 2–10

Password 3–14

Patches

- Version 9.1D 2–2

PDF documentation

- Acrobat Reader 4.05 A–3
- Acrobat Reader 5.0 A–3
- copying A–5
- error inserting CD A–5
- opening files manually A–4
- Search button A–4
- searching A–2

Platforms

- supported 1–5

Port numbers 3–2

Preinstallation tasks 1–7

Prerequisites

- software 1–6

Pro*Tools 3–15

Processing date 3–14

PRODB utility 2–10

Product Control number 2–4

Product serial number 2–4

Products

- to install 2–4

Program folder

- selecting 2–8

Progress AppServer

- usage in Dynamics 2–7

Progress Dynamics

- AppServer usage 2–7
- directory structure 2–5
- initial sessions 3–13
- installation platforms 1–5
- securing an installation 3–16
- shutting down 3–18
- starting up 3–12
- uninstalling 3–18

Properties file

- backup 2–7

Q

Quitting

- InstallShield 2–8

R

Registering

- site numbers 1–7

Release notes 1–7

Remote database

- loading 2–10

Remote installation 1–7

Removing Progress Dynamics 3–18

Repository

- creating 2–10
- installing on UNIX 1–5
- location 2–6
- registering 1–7
- remote installation 1–7

Running

- InstallShield 2–2
- Progress Dynamics 3–12

S

Searching PDF documentation A–2

Securing an installation 3–16

Serial numbers 2–4

Services file

- editing 3–2

Shutting down Progress Dynamics 3–18

Site code 1–7

Sites

- registering 1–7
- types of 1–7

startdbs.bat file

- editing manually 3–3

Starting

- database servers 3–13
- Progress Dynamics 3–12

Startup parameters

- icfdb 2–10

Static HTML files 2–7

stopdbs.bat file 3–3

Stopping

- InstallShield 2–8
- Progress Dynamics 3–18

Stopping Progress Dynamics 3–18

Summary of tasks

- new installation 1–2
- upgrade 1–3

Summary screen 2–8

Supported platforms 1–5

System requirements 1–5

T

Typographical conventions viii

U

ubroker.properties 2–6

Uninstalling Progress Dynamics 3–18

UNIX

- installing the Repository 1–5

Upgrading

- default directory 2–5

User password

- changing 3–16

V

Version 9.1D patch
 acquiring 2–2

Virtual directory 2–7

W

Web development 2–7
 set up 3–12

Web files
 static 2–7

Web server 1–6

WebSpeed Broker
 create option 2–7

Working directory
 defined 2–6

Working Path
 DCU 2–10

Working path directory 2–5

wsdynamics1 broker 2–7

X

XML files
 parsing 2–10

